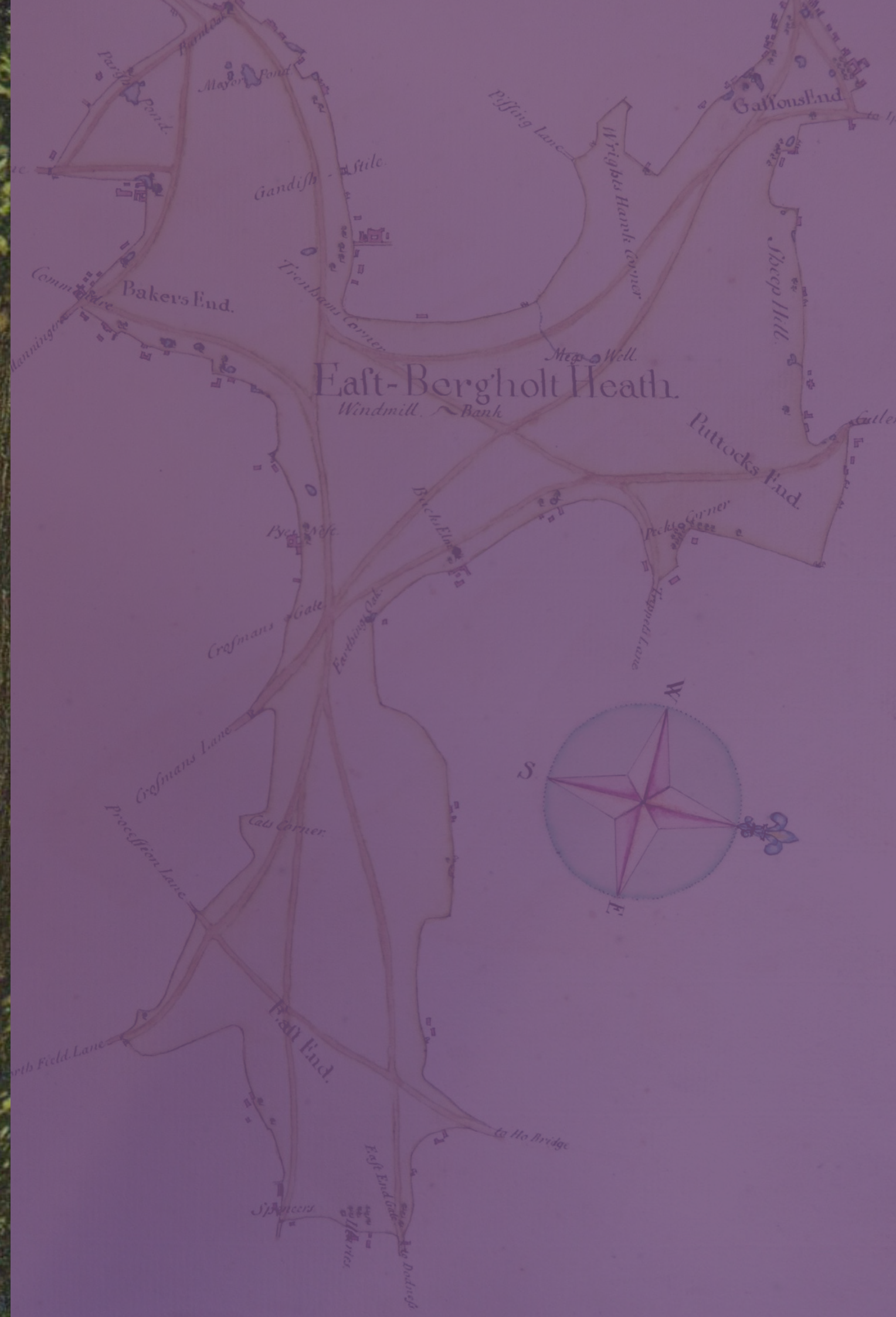
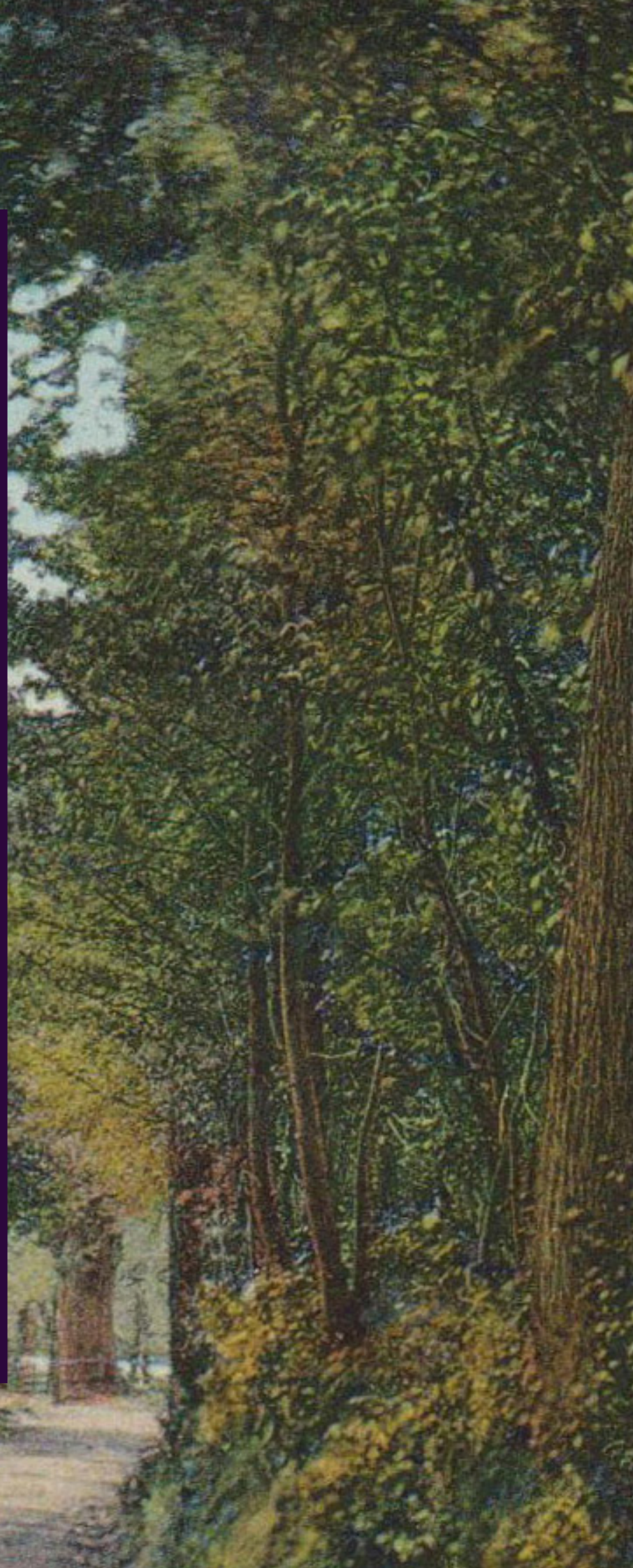
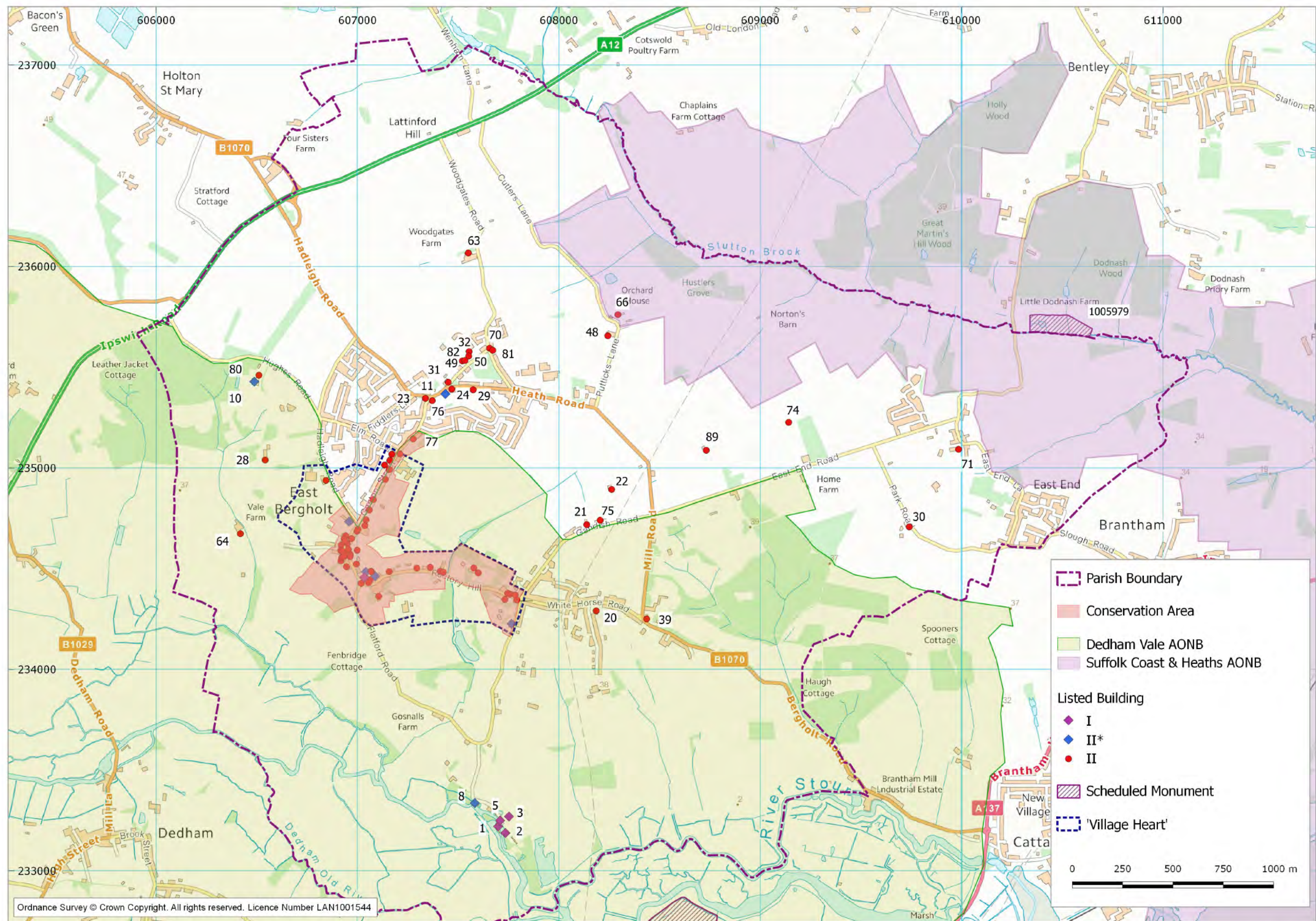
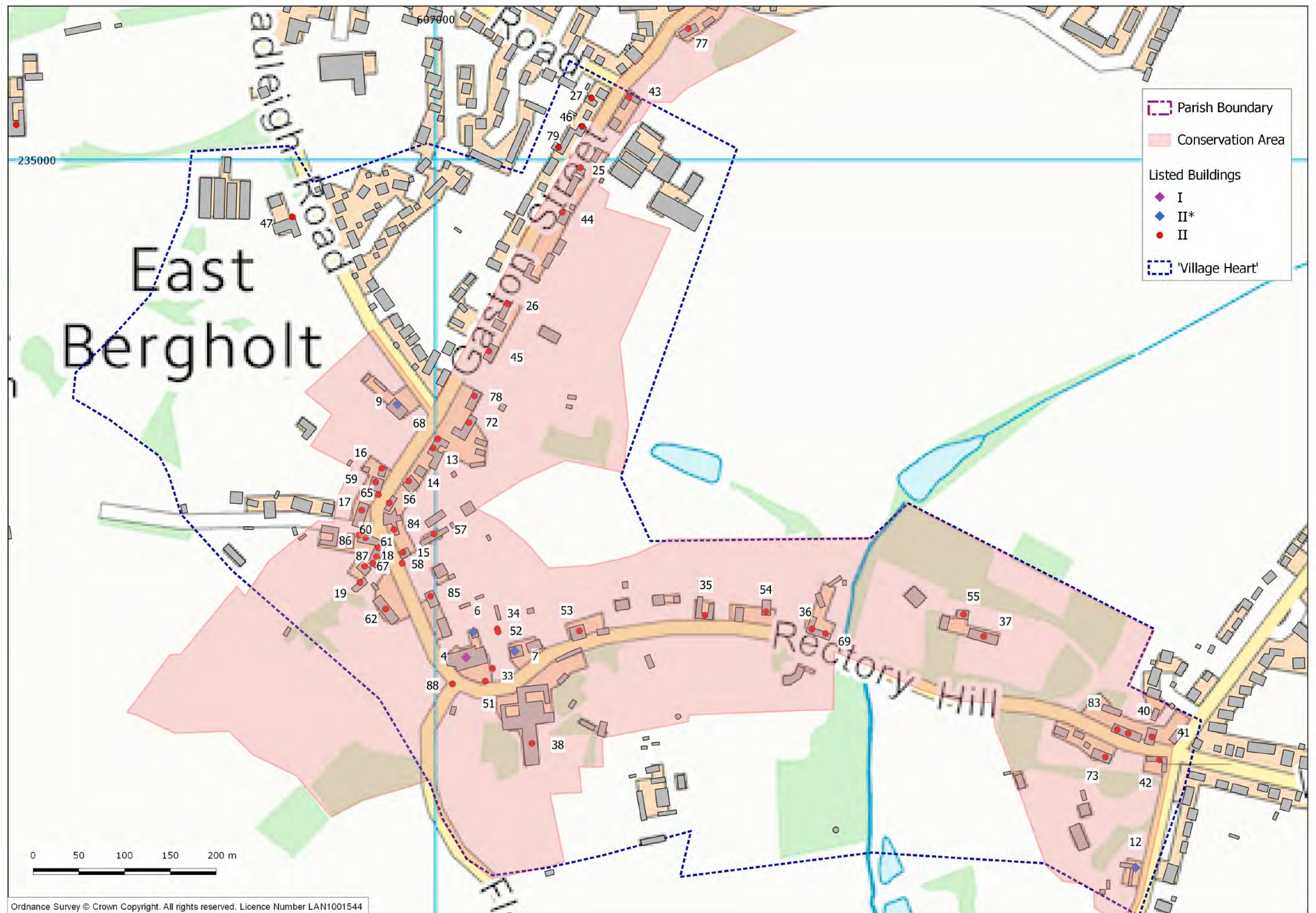


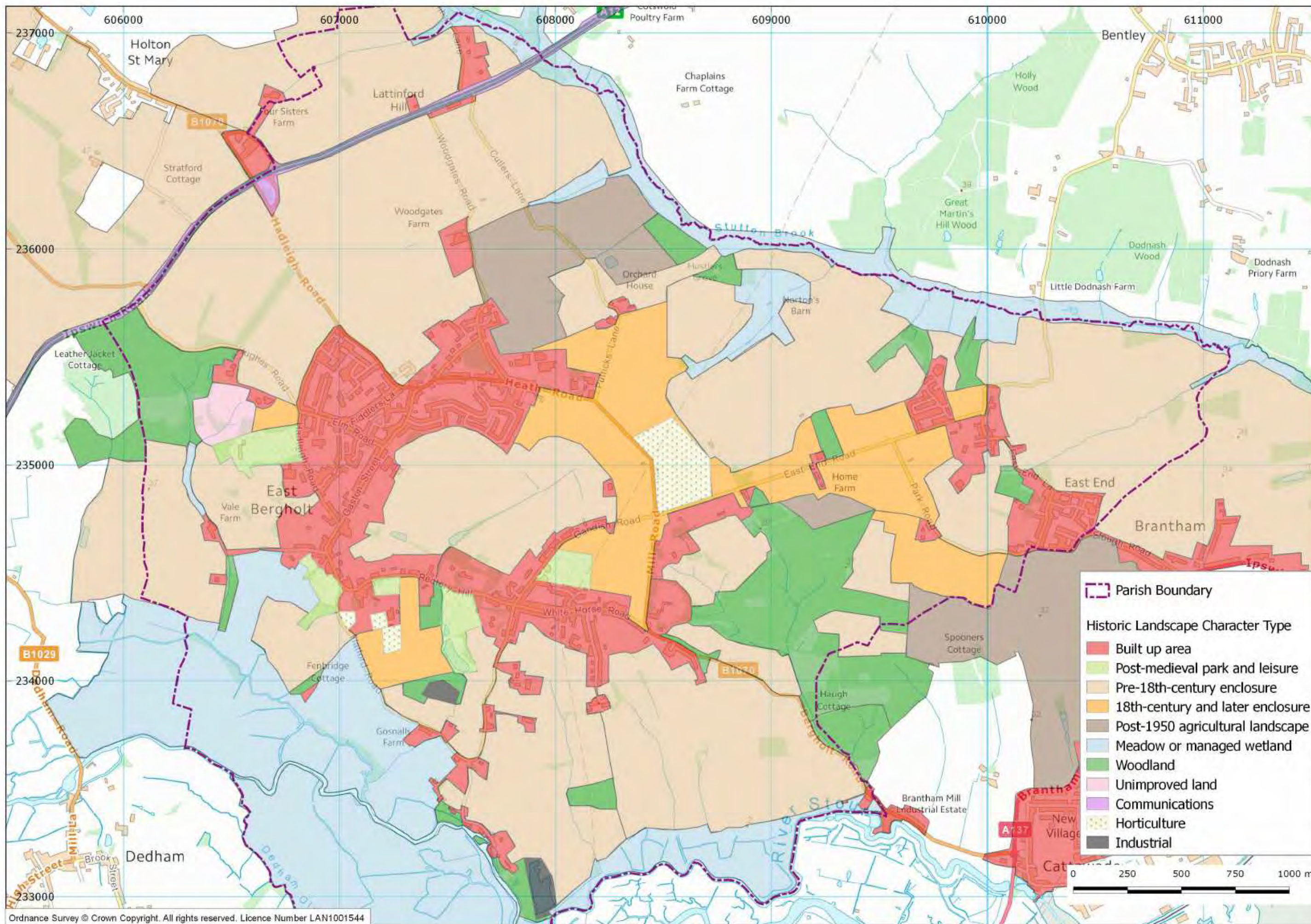
Appendix 6 Figures

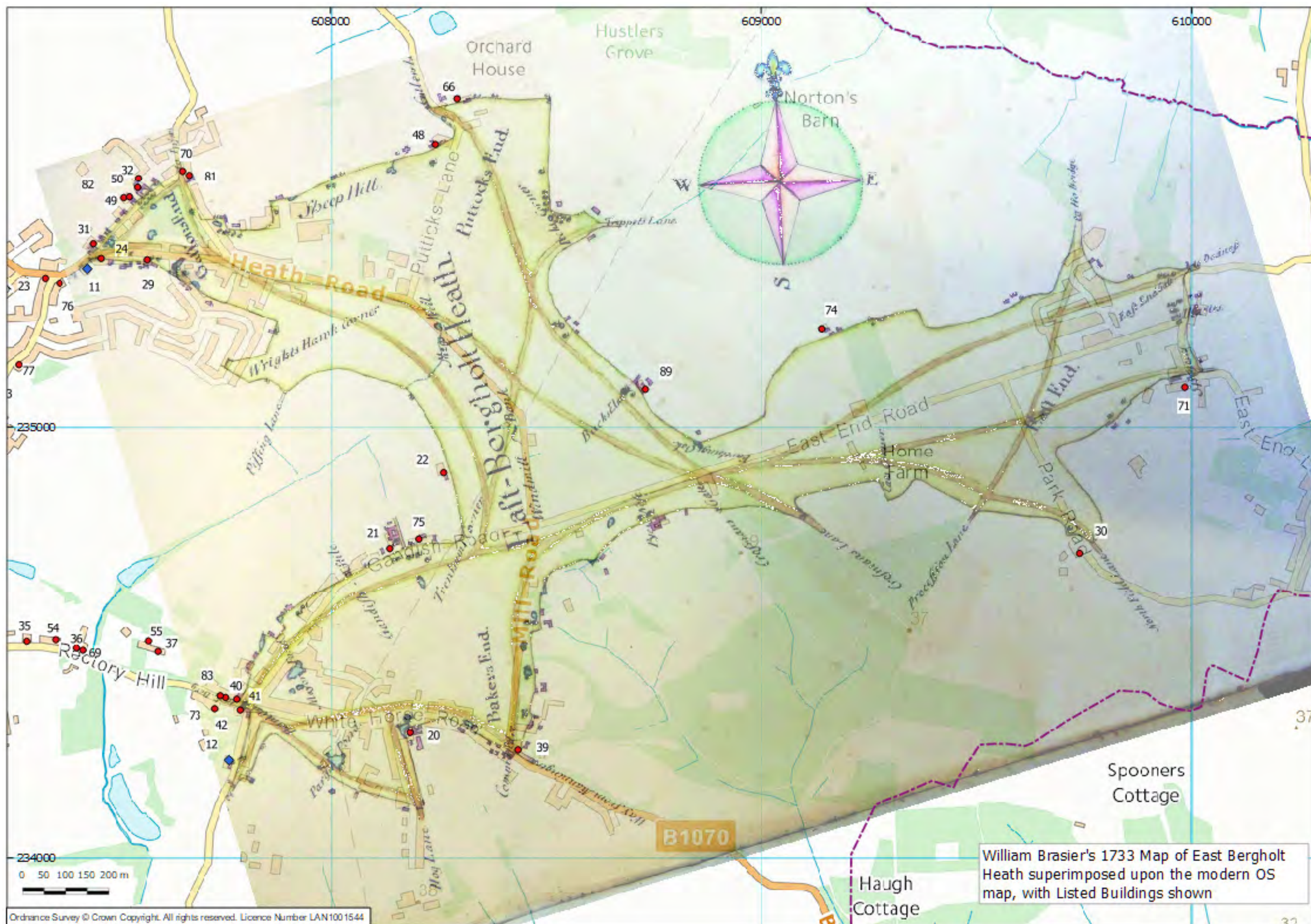
On behalf of East Bergholt Parish
Council

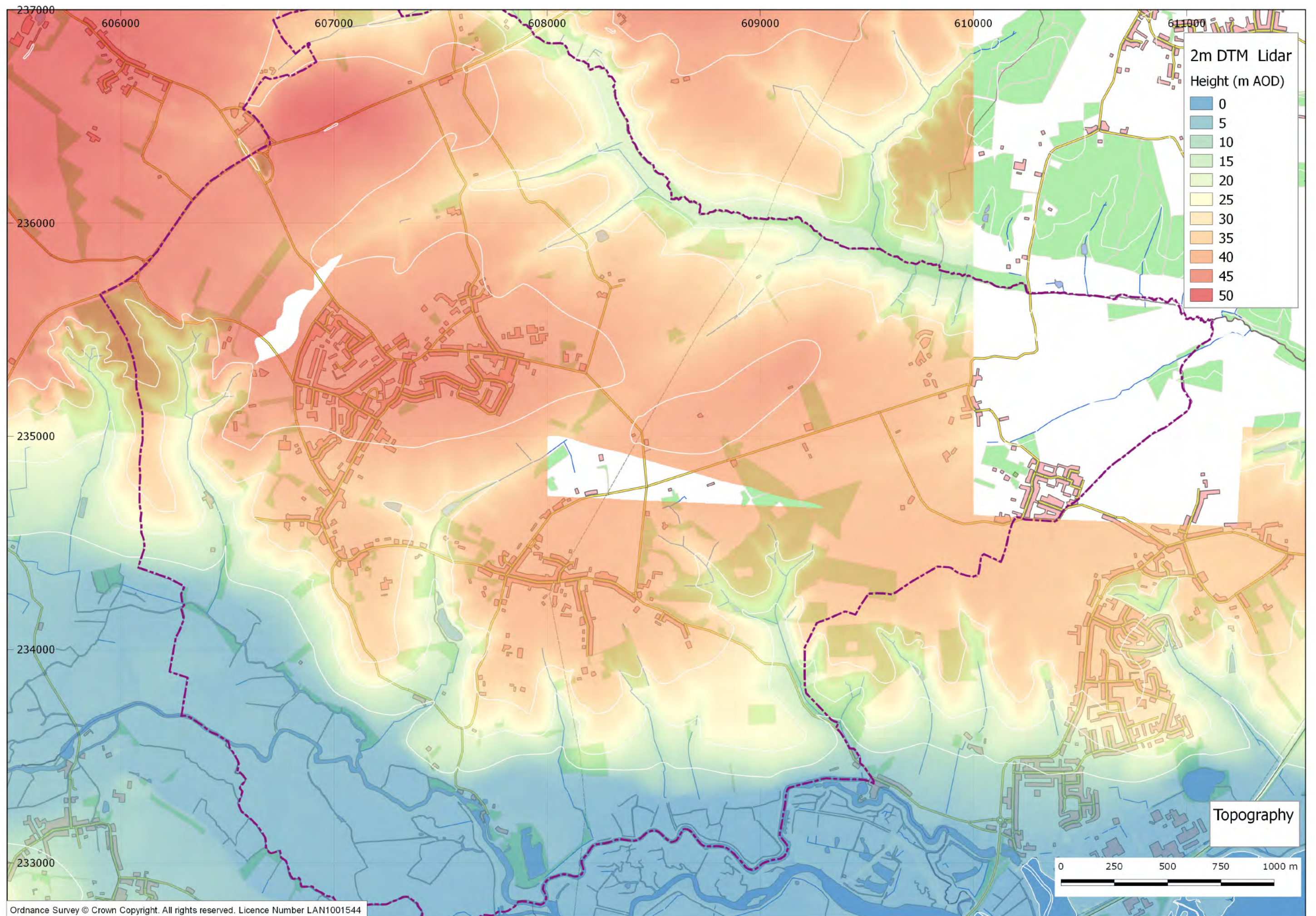


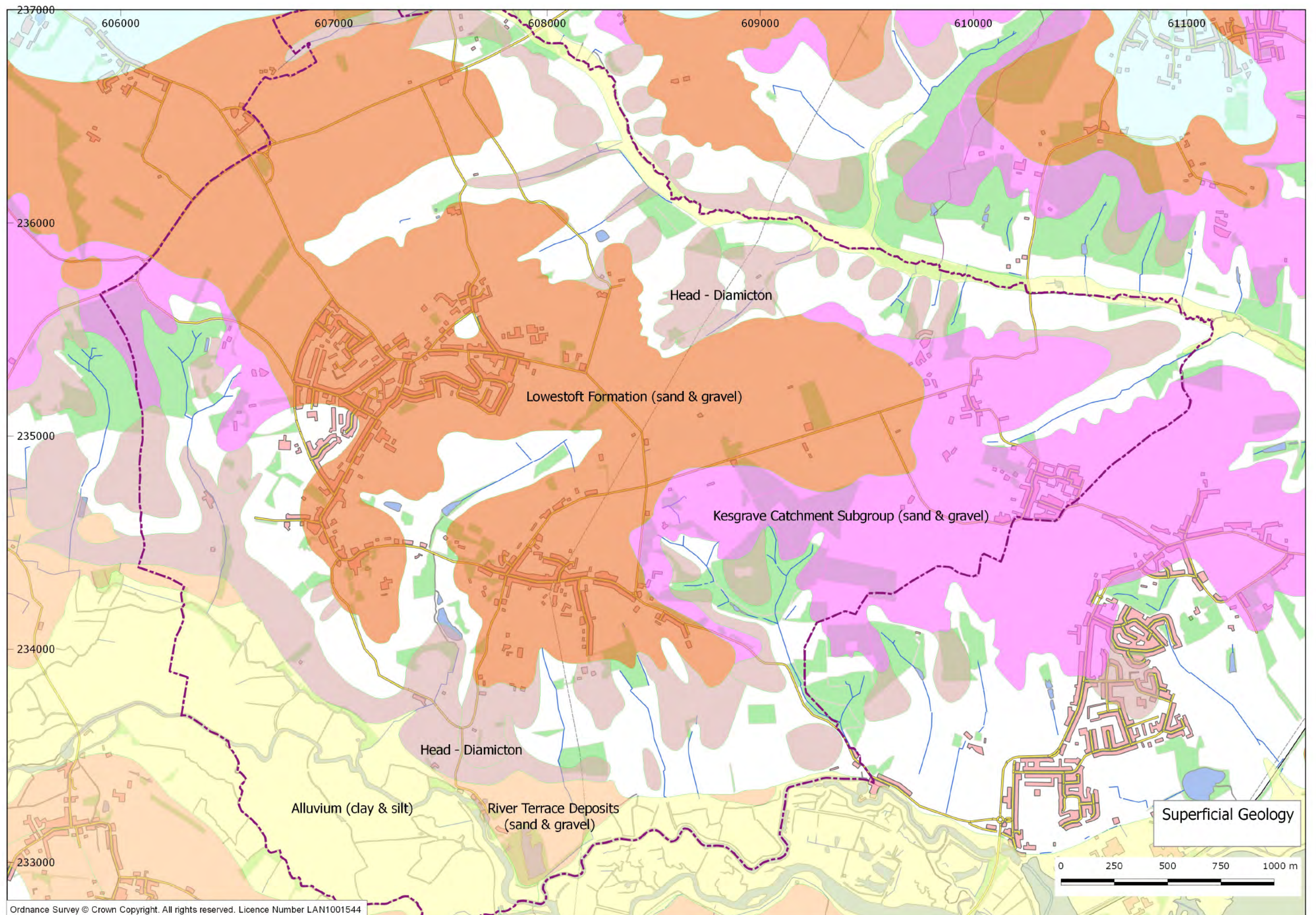


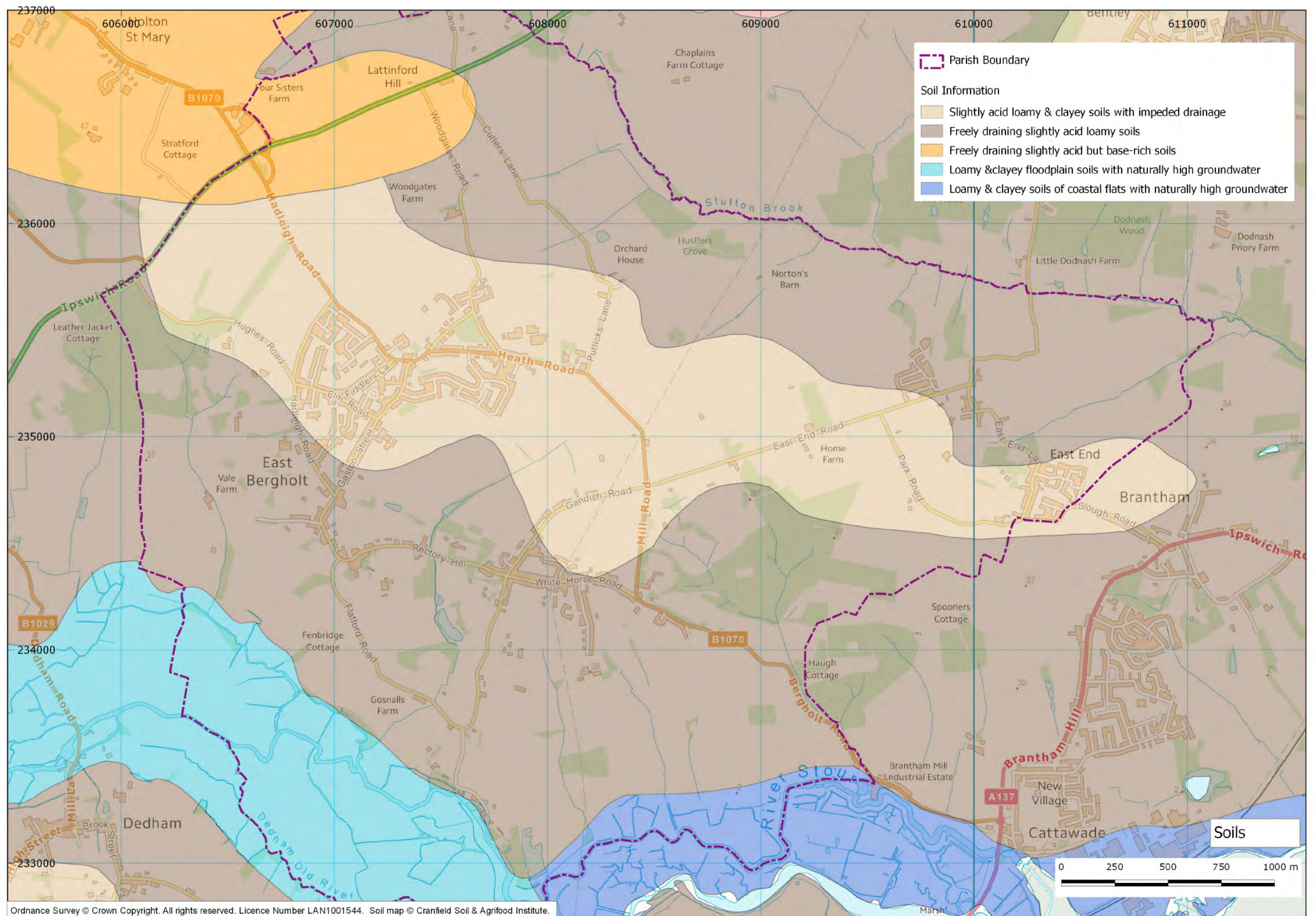


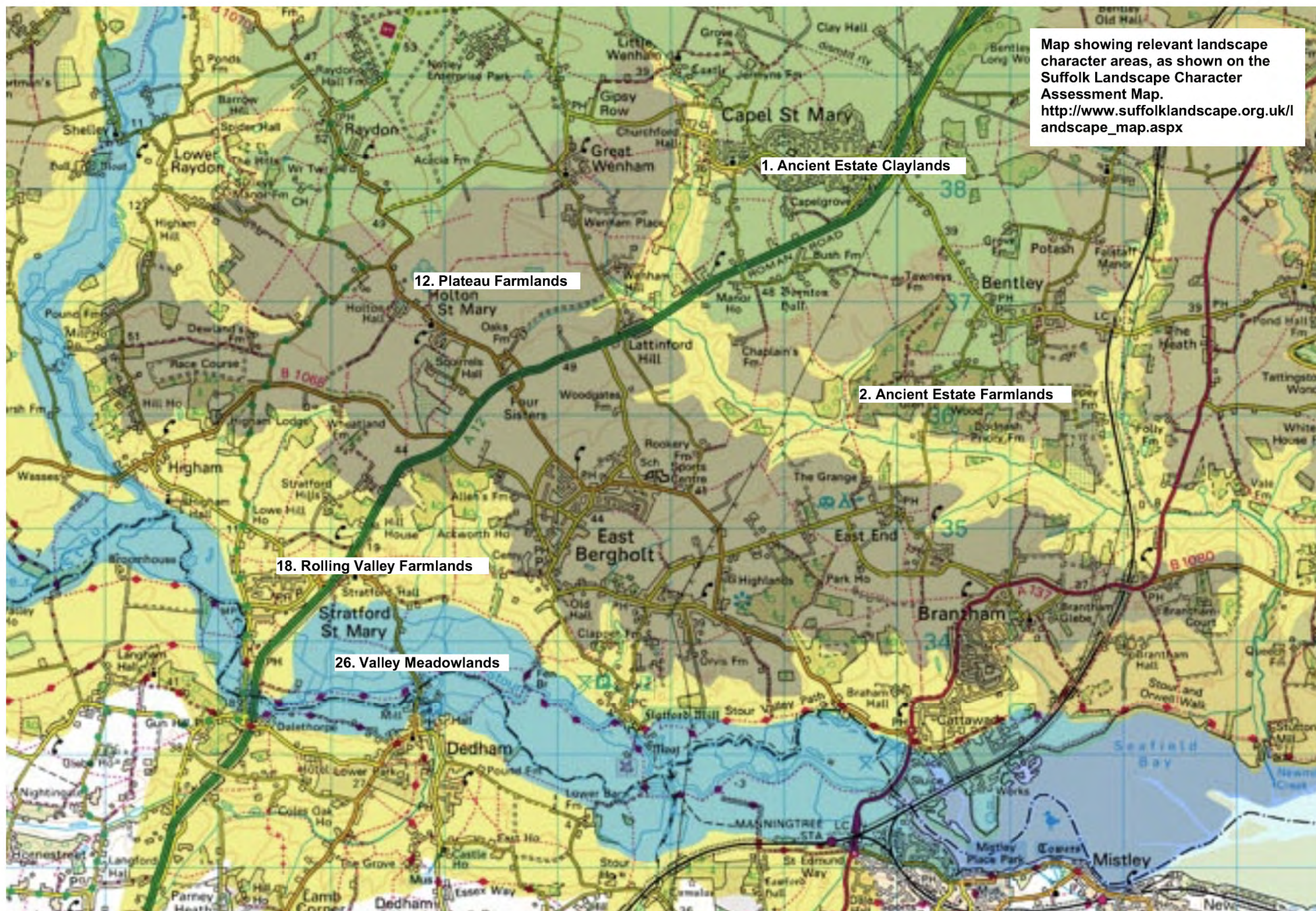


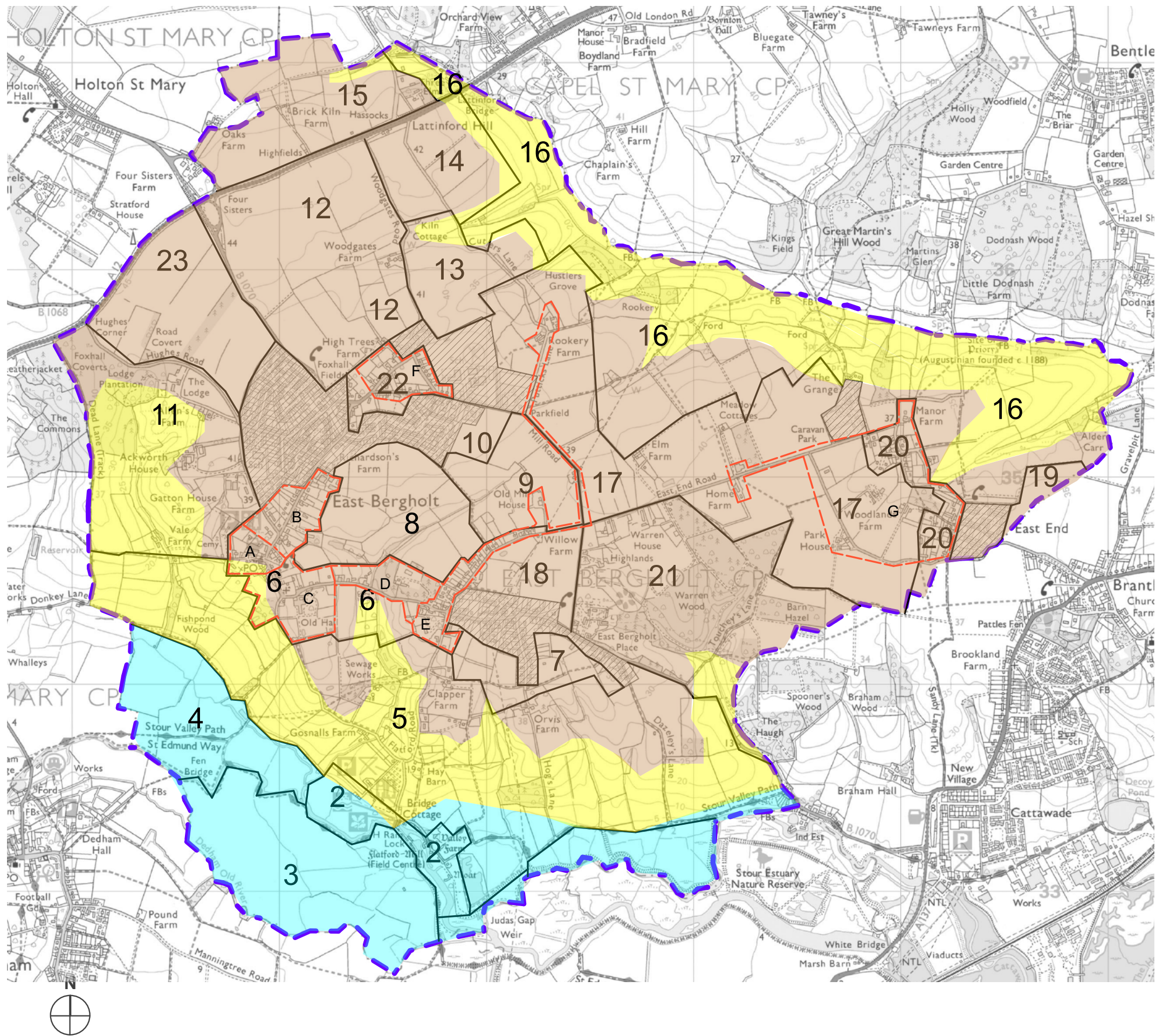












KEY

Suffolk Landscape Character Areas



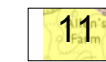
Plateau Farmlands



Rolling Valley Farmlands



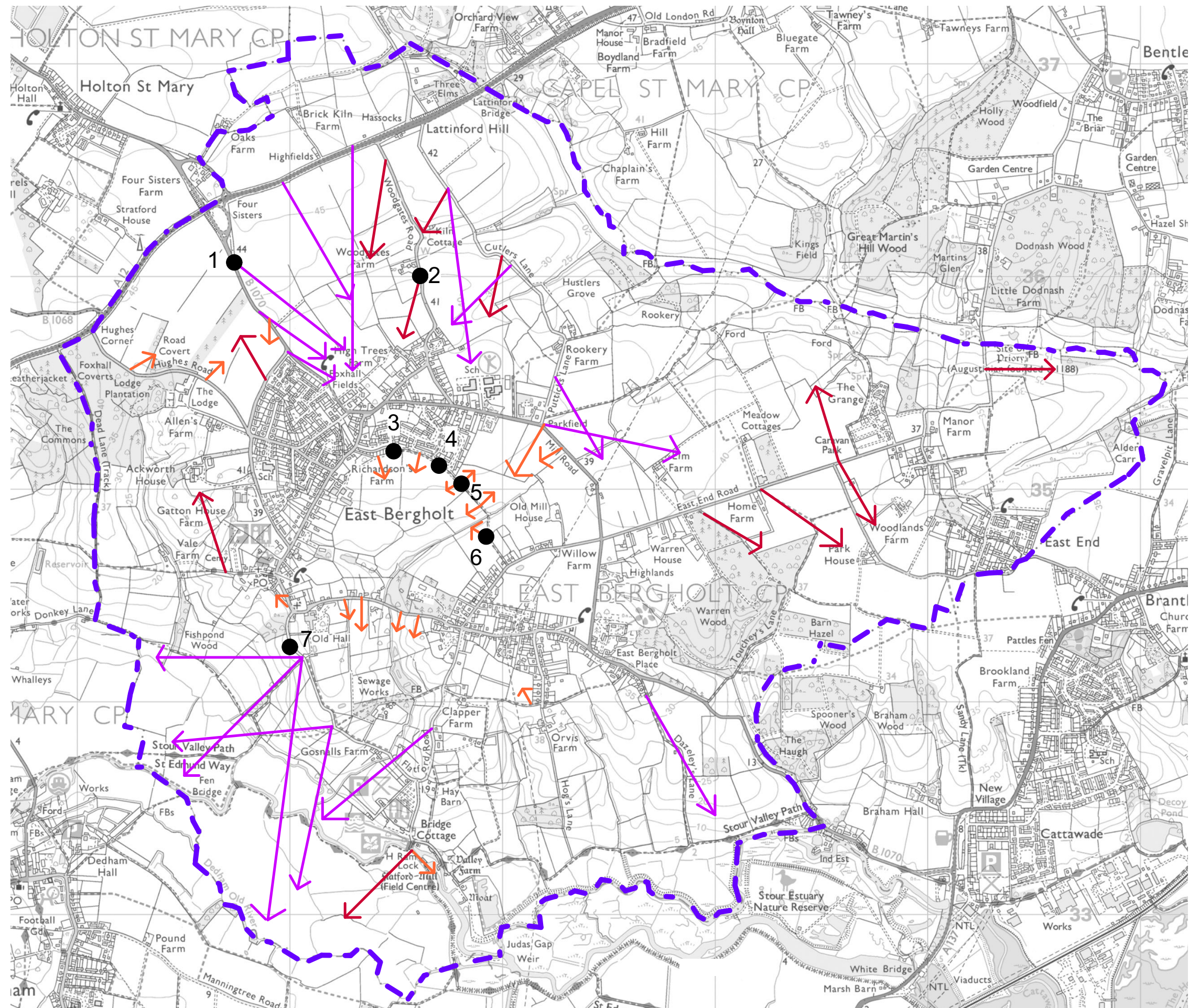
Valley Meadowlands



Parish Scale LCA Land Parcel Reference



Historic Village Character Areas (A-G)



Project:
Historic Landscape Study of East Bergholt

Description:
Views and Viewpoint Locations

Figure: 3.6

Date: September 2020



Viewpoint 1- View from the B1070 (southeast)



Viewpoint 2- View from Woodgates Road (south west)



Viewpoint 3- View from Public Footpath near Chaplins Road



Viewpoint 4- View from Public Footpath near Richardson’s Road



Viewpoint 5 - View from Public Footpath "Donkey Path" between Land Parcel 8 and 9 (south)
Note the rolling landform of the Riber Valley and former East Bergholt Common. Settlement edge, including Doctor's Surgery and adjacent properties to the right of the view are detractive to the rural character.

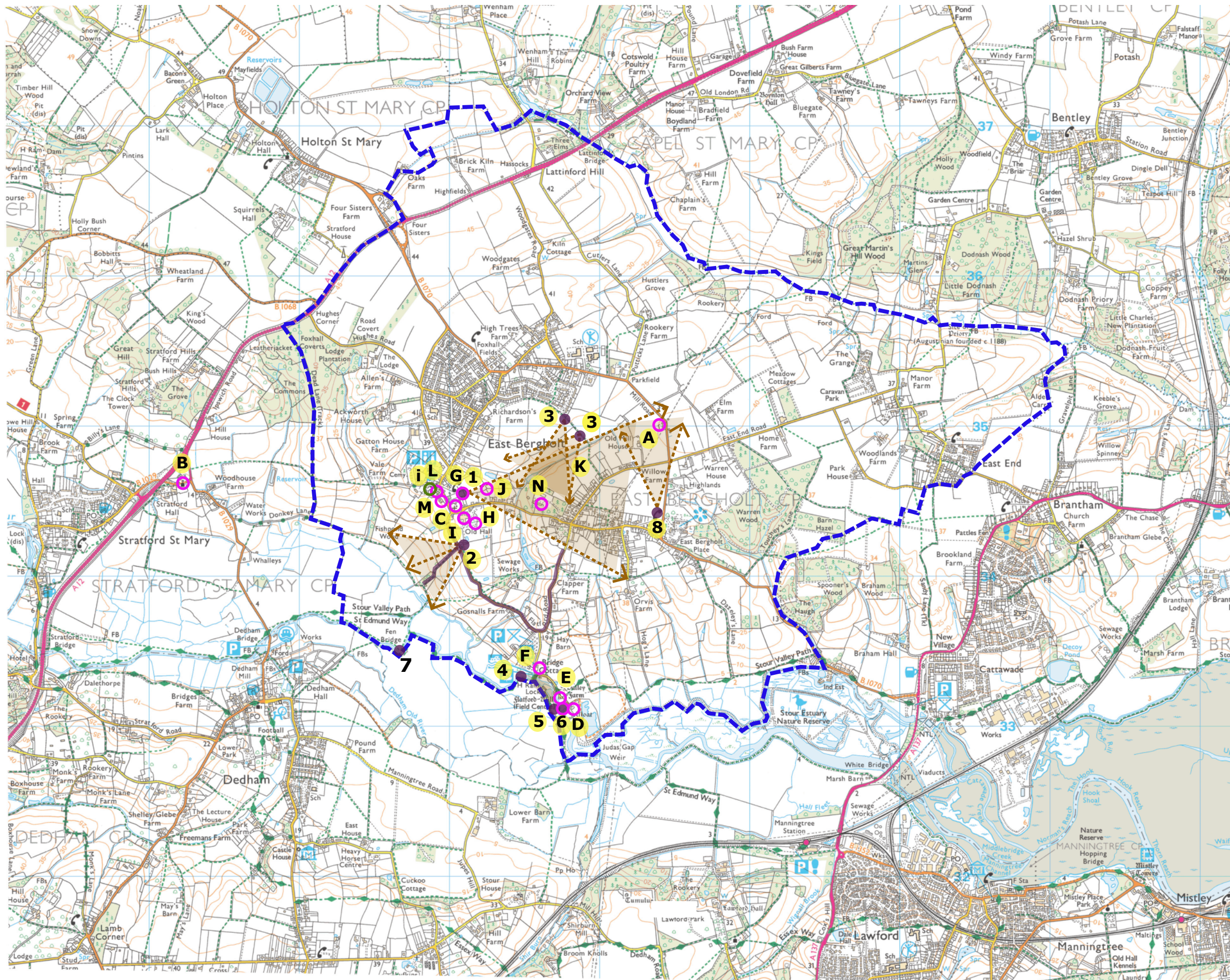


Viewpoint 6- View from Public Footpath "Donkey Path" south of Gandish Road
Note the plantation woodland surrounding the Old Rectory and distinctive rolling landform of the tributary valley, both recognisable components in Constable's compositions



Viewpoint 7 - View Across Stour Valley from Flatford Lane (south)

The picturesque rolling valley pastoral landscape was represented in Constable's most famous work. Dedham Church can be seen nestled in woodland south of the valley.



- Parish Boundary
- Artist's Location
 1. Golding Constable's House
 2. Fen Lane/ Flatford Lane
 3. Donkey Path
 4. South Bank of River Stour near Flatford Lock
 5. South Bank of River Stour
 6. North Bank of River Stour, Miller's House and Cottage
 7. River Stour near
 8. East Bergholt Heath
- Landmark/ building in John Constable's Painting
 - A. Windmill
 - B. Stratford St. Mary Church
 - C. Church of St. Mary
 - D. Willy Lot's Cottage
 - E. Flatford Mill
 - F. Bridge Cottage
 - G. Golding Constable's House (East Bergholt House)
 - H. Old Hall Park
 - I. Old Hall
 - J. East Bergholt Common
 - K. East Bergholt Heath
 - L. Beaufort Cottage
 - M. Stour (house seen in East Bergholt Fair)
 - N. The Old Rectory
 - O. Coach house to the Old Rectory
- Other Constable Associations
 - i. Moss Cottage (used as an artist's studio)
- Estimated view splay and direction of view from artist's location, inferred from John Constable paintings and images

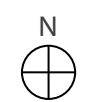
0 1 km

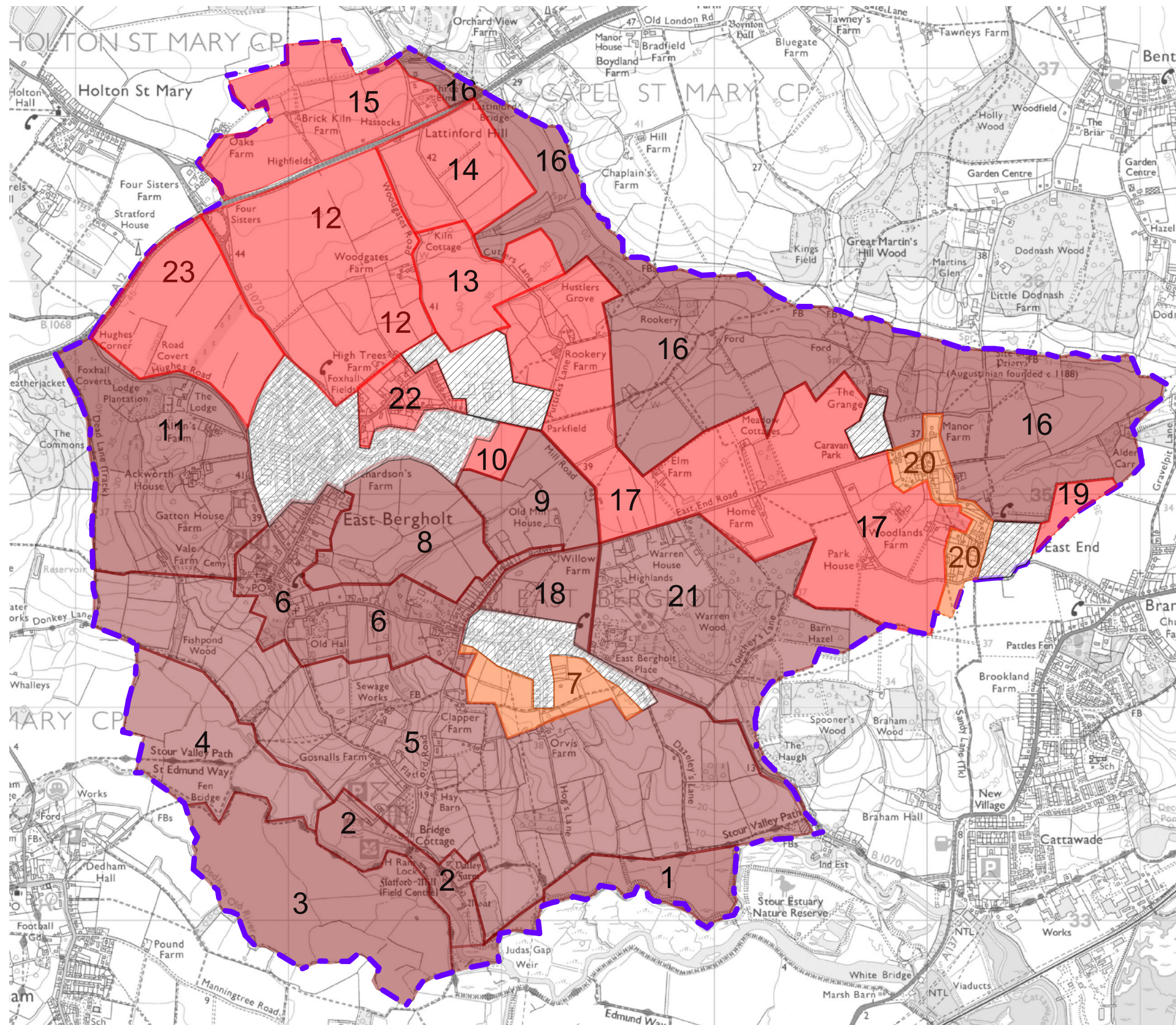
Project:
Historic Landscape Study of East Bergholt

Description:
John Constable Artist Locations

Figure: 4.1

Date: September 2020





- KEY**
- Parish boundary
 - Existing predominantly modern built-up development
 - High Sensitivity
 - Medium-High Sensitivity
 - Medium Sensitivity



Project:
Historic Landscape Study of East Bergholt

Description:
Landscape and Heritage Sensitivity

Figure: 5.2

Date: September 2020

HCUK
GROUP